

CERTIFICATE OF LOCATION OF GOVERNMENT CORNER

NORTHEAST Corner of Section 07, Township 107N, Range 43W

5th Principal Meridian, State of Minnesota, County of Murray

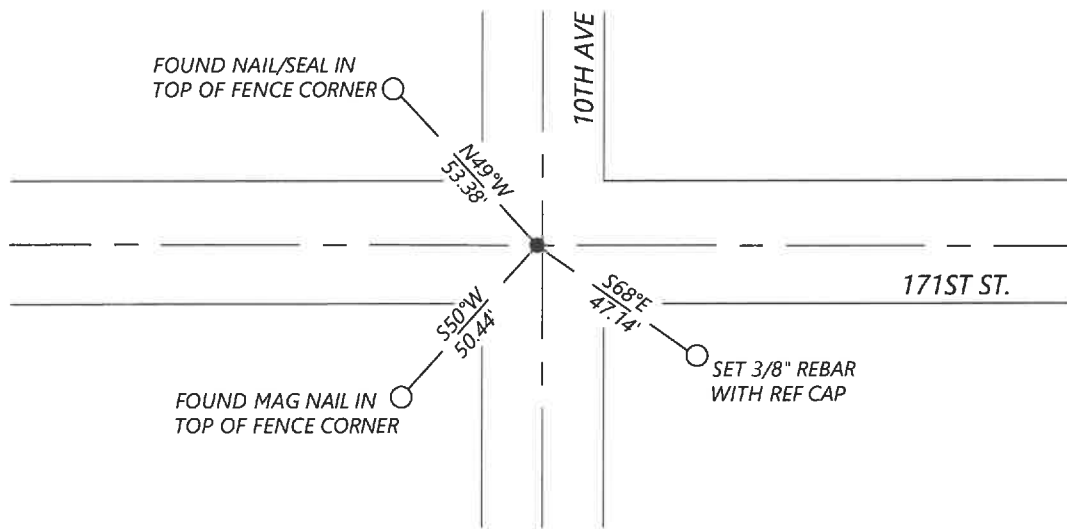
At the corner location shown on the sketch:

☒ On 11/10/2022 found a 5/8" rebar with cap 11943 and 2 ties of previous record.

☒ left monument as found ☐ lowered monument ☐ removed monument (explain)

☒ On _____ placed a 1 new tie.

SKETCH OF REFERENCE TIES



N.T.S.

Statement of evidence for this corner location is on back of this page.

I hereby certify that this document was researched and prepared by me or under my direct supervision and that I am a licensed Land Surveyor under the laws of the State of Minnesota.

Signature Karl Brown

Date 12/29/2022 License No. 56488

Title:

☒ Land Surveyor ☐ Professional Engineer
☐ County Surveyor ☐ County Engineer

OFFICE OF THE COUNTY RECORDER

County of Murray

I hereby certify that this

document was filed in the Co.

JAN 05 2023

Recorder's office at _____ M. on the

_____ day of _____ A.D. 20

County Recorder Karen Brown

by _____, Deputy

DOCUMENT NO. _____

KYLE JOHNSON
Minnesota License No. 56488

Statement of Evidence:

Northeast Corner of Section 07, Township 107 North, Range 43 West, 5th Principal Meridian, Murray County, Minnesota.

1866- GLO set a post in mound of earth.

2001- Lyle Moseng, LS11943, filed a corner record stating he excavated and found numerous small stones. Did not hold the stones. Set a 5/8" rebar at occupation and notes 2 ties.

2022- Westwood Professional Services found a 5/8" rebar with cap LS11943 and 2 ties of previous record. Accepting corner location and set 1 tie.

Analysis of the recovered data, field evidence and survey measurements, indicates that the monument found is the correct perpetuation of this corner. For additional information concerning this corner please contact Westwood Professional Services.